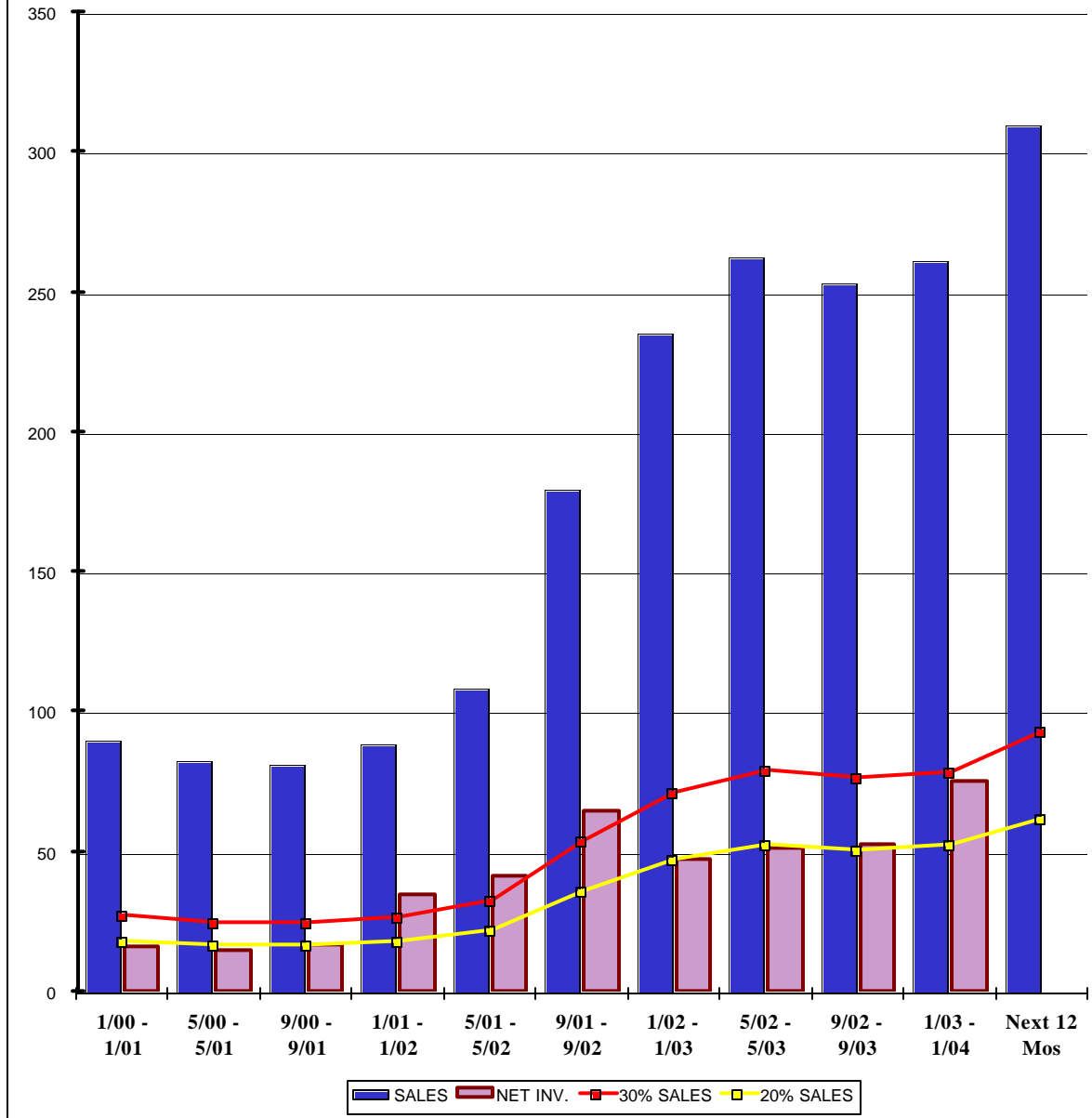




## MG Area 32 - Wyandotte County

### Historical New Home Supply vs. Demand

(Only active subdivision data, not homes built on odd lots)



	1/00 - 1/01	5/00 - 5/01	9/00 - 9/01	1/01 - 1/02	5/01 - 5/02	9/01 - 9/02	1/02 - 1/03	5/02 - 5/03	9/02 - 9/03	1/03 - 1/04	Next 12 Mos
<b>SALES</b>	90	83	82	89	109	180	236	263	254	262	310
<b>NET INV.</b>	16.2	14.6	16.8	34.8	40.9	64.6	47.0	51.0	52.7	74.8	
<b>30% SALES</b>	27.0	24.9	24.6	26.7	32.7	54.0	70.8	78.9	76.2	78.6	93.1
<b>20% SALES</b>	18.0	16.6	16.4	17.8	21.8	36.0	47.2	52.6	50.8	52.4	62.1

The best Net Inventory should fall under the 20% of annual sales range. Above 30% is a problem. This chart has column